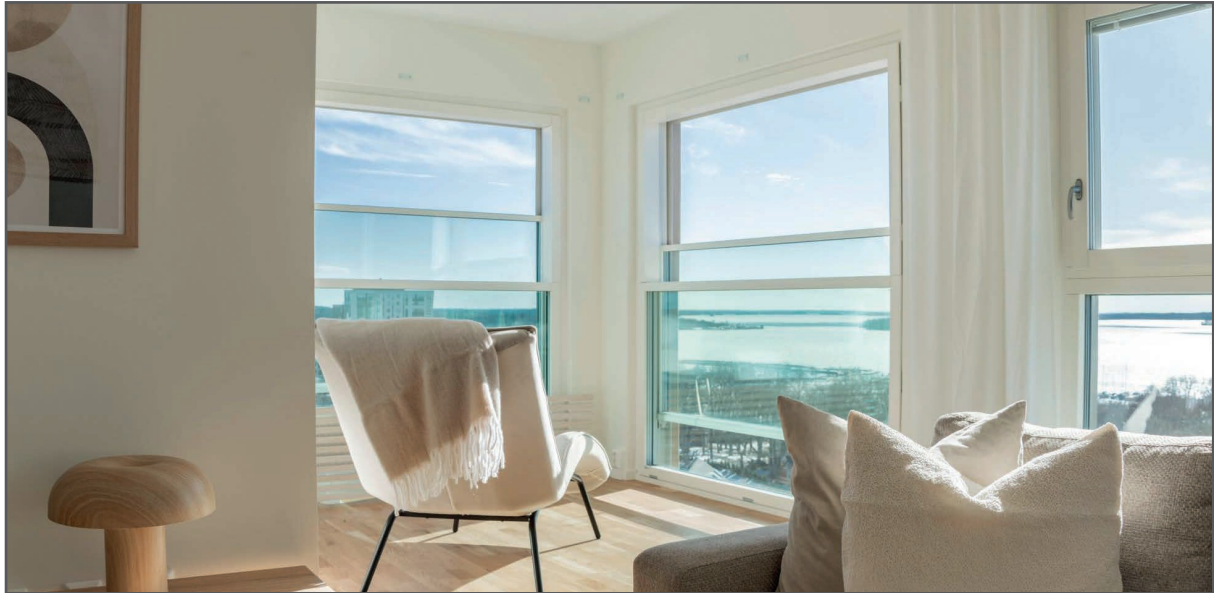


**SVALSON
MAKE
WINDOWS
SLIDE**

>> SVALSON OPEN



2025.03 (eng)



CE

Vertically sliding electrical window

Svalson Open is a vertical opening, electrically operated window with a modern look and the latest technology. The window is suitable for both residential housing as well as offices and public spaces. The window consists of a fixed lower glass section that can be folded inward for cleaning and an upper glass section that moves vertically. The upper glass panel can be opened steplessly to any height and is automatically locked in both the closed and ventilation positions. Opening and closing are controlled via a control panel, remote control, or smart home system.

With Svalson Open you can achieve a balcony-like feel where a balcony is not possible, and the big glass surfaces provides maximum light input.

Svalson Open is manufactured in compliance with applicable directives and the harmonized standard SS-EN 14351-1, Windows and Doors – Product Standard, Performance Characteristics. Svalson Open is CE-marked and meets quality requirements equivalent to P-marking, SFDK, and the essential requirements of the Swedish National Board of Housing, Building and Planning (Boverket).

>> TECHNICAL INFORMATION

NAME

Svalson Open.

DESIGN

Solid wooden frame with wooden interior and metallic exterior. Svalson Mechanical Safety System, motor, transmission and automatic locking are integrated within the frame. Service and maintenance is made from the inside.

SURFACE COATING

Inside: Painted knot-free pine moldings as standard.
Outside: Powder coated aluminium as standard.
Standard color is white, for the inside NCS 0502-Y gloss 30, and for the outside, RAL 9010 gloss 70.
Other colors and wood types, such as oak or teak, are available as options.

GLASS

Triple-glazed insulating glass, tempered and laminated safety glass, with solar protection and energy efficiency as standard.
Optional glass includes fire-resistant glass in class EW 30 for the fixed lower section and extra soundproof glass.

U-VALUE

Uw from 0.9, depending on size and glass type.

DIMENSIONS AND SIZES

Sizes are specified in modular measurements (dm), which refers to the wall opening size. The module size includes a 20 mm fitting allowance in width and height (10 mm all around). 10 M corresponds to a wall opening size of 1000 mm, resulting in a frame outer dimension of 980 mm. The fixed lower glass section has a parapet height of 11 M or 13 M. The final parapet height depends on the installation height from the floor.

Available sizes:

Height \ Widht	10 M	11 M	12 M	13 M	14 M	15 M	16 M	17 M	18 M	19 M	20 M
24 M / 13 M	x	x	x	x	x	x	x	x	x	x	x
21 M / 11 M	x	x	x	x	x	x	x	x	x	x	x

OPENING/CLOSING

Delivered as standard with a wireless remote control. Can also be connected to smart home systems. Secure and relieved opening/closing with pinch protection.

POWER SUPPLY

230V AC. Connection cable through the upper frame.

LOCKING

Automatically locked in closed position/ventilation mode at optional height.

CE MARKING

In accordance with the harmonized standard SS-EN 14351-1, Windows and Doors – Product Standard, Performance Characteristics, as well as the Machinery Directive and EMC Directive.

VERIFIED PERFORMANCE

Thermal insulation Uw	From 0.9 W/(m ² K), depending on size and glass.
Sound insulation Rw	36 dB
Wind load resistance	Class 3C (tested up to max size 20 x 21/11)
Water tightness	Class 9A
Air tightness	Class 4

CERTIFIED BY

RISE - Research Institutes of Sweden

MANUFACTURED BY

Svalson AB, Sweden

